

SSFA comparison

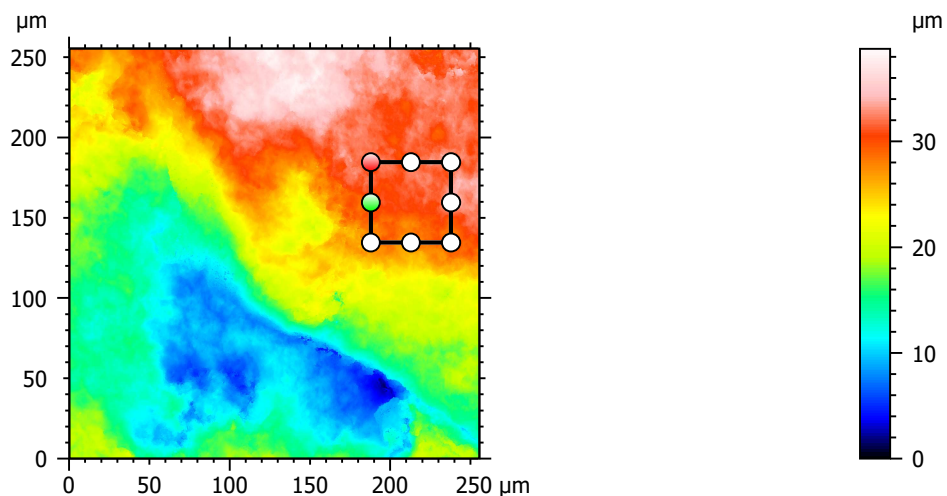
Template to process all lithic surfaces acquired with the Zeiss LSM 800 with the 50x/0.95 objective.

A. Processing

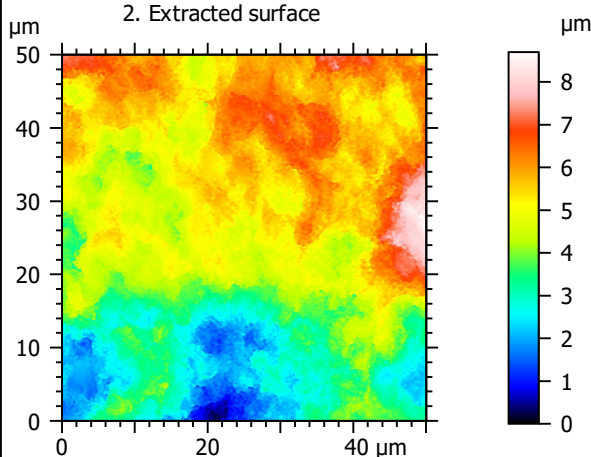
Identity card

Name:	FLT3-13_LSM2_50x-0.95_20190730_Area2_Topo		
File path:	D:\Data\3Ddata\SSFA\Lithics\Original surfaces\FLT3-13_LSM2_50x-0.95_20190730_Area2_Topo.sur		
Created on:	7/30/2019 12:01:37 PM		
Studiable type:	Surface		
Axis:	X		
Length:	255.5	μm	
Size:	3000	points	
Spacing:	0.08519	μm	
Axis:	Y		
Length:	255.5	μm	
Size:	3000	points	
Spacing:	0.08519	μm	
Axis:	Z		
Layer type:	Topography		
Length:	38.76	μm	
Size:	65532	digits	
Spacing:	0.0005915	μm	
NM-points ratio:	0.000 % (0 Pts)		

1. Acquired surface

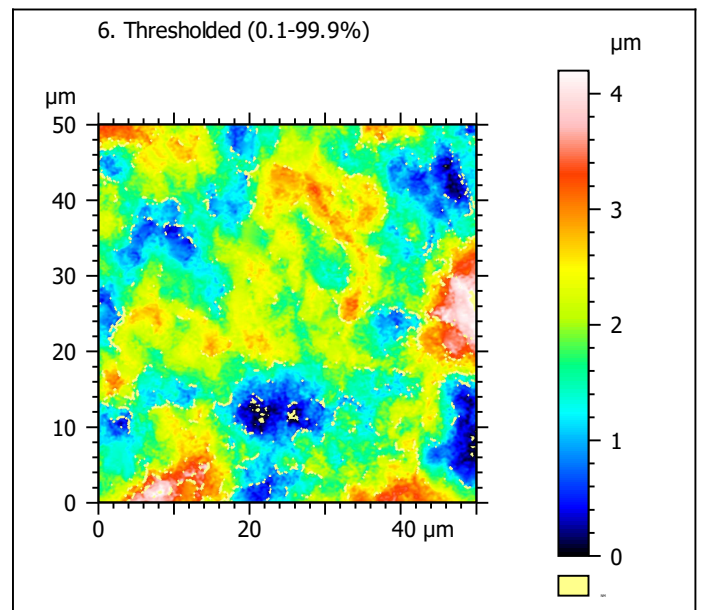
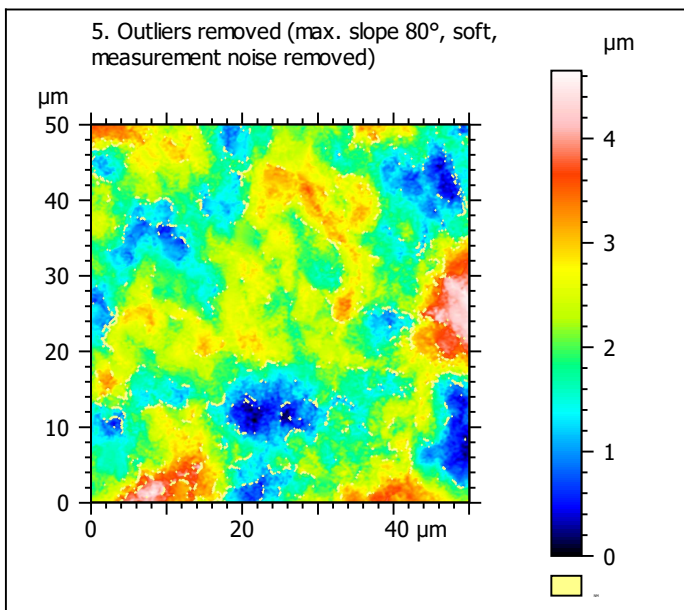
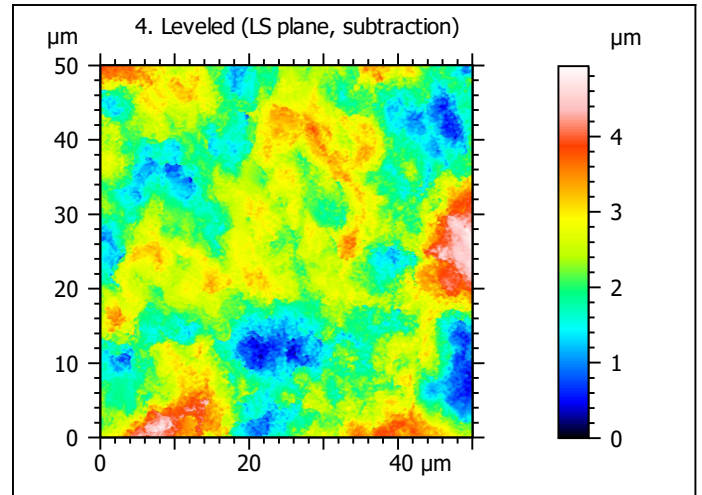
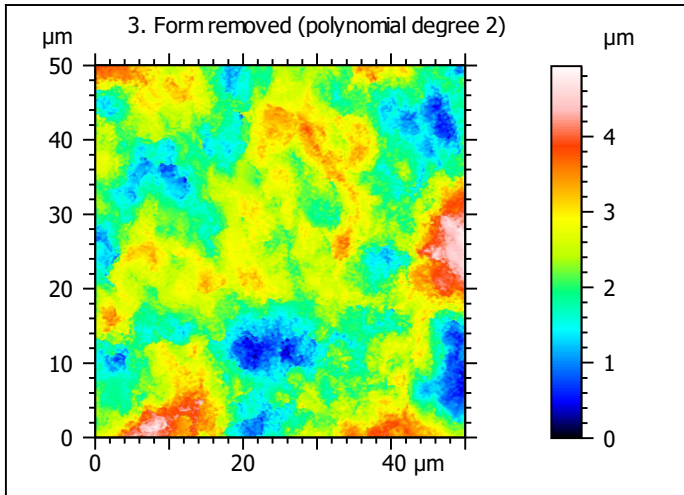


2. Extracted surface



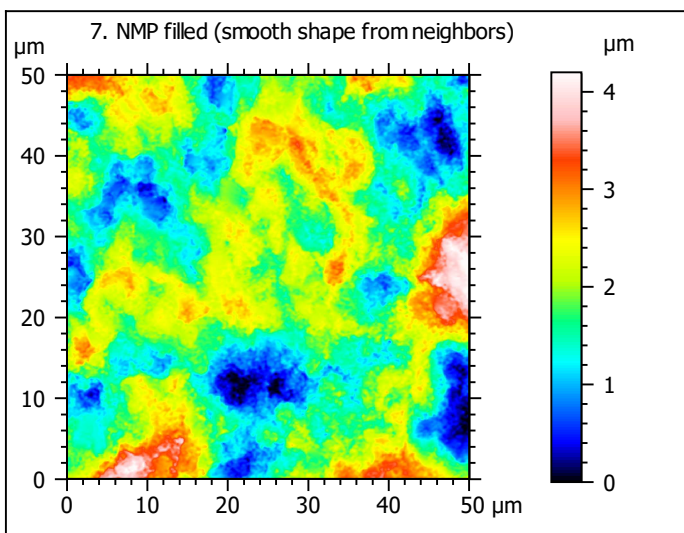
Identity card

Name:	FLT3-13_LSM2_50x-0...opo > Extracted area		
Axis:	X		
Length:	50.00	μm	
Size:	588	points	
Axis:	Y		
Length:	50.00	μm	
Size:	588	points	
Axis:	Z		
Layer type:	Topography		
Length:	8.699	μm	
Size:	14707	digits	
NM-points ratio:	0.000 % (0 Pts)		

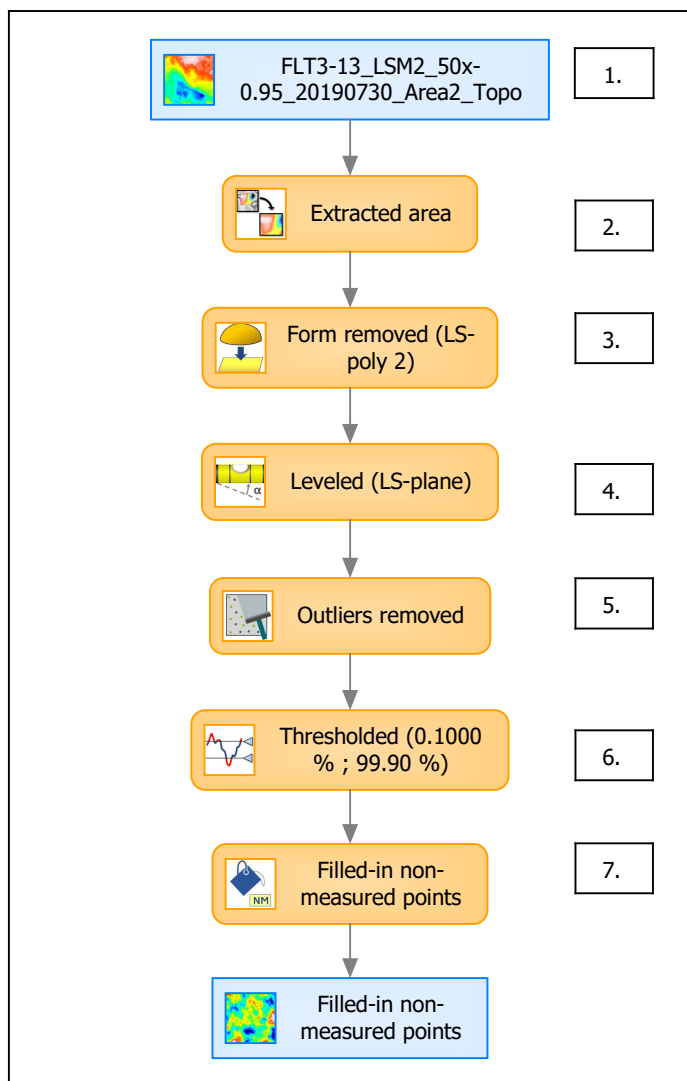


Identity card	
Name:	FLT3-13_LSM2_50x-0...e) > Outliers removed
Axis:	Z
NM-points ratio:	4.472 % (15460 Pts)

Identity card	
Name:	FLT3-13_LSM2_50x-0...0.1000 % ; 99.90 %)
Axis:	Z
NM-points ratio:	4.662 % (16117 Pts)



B. Summary



Identity card

Name: FLT3-13_LSM2_50x-0.95_20190730_Area2_Topo > Extracted are...resholded (0.1000 % ; 99.90 %) > Filled-in non-measured points

Studiable type: Surface

Axis: X

Length: 50.00 μm

Size: 588 points

Spacing: 0.08519 μm

Axis: Y

Length: 50.00 μm

Size: 588 points

Spacing: 0.08519 μm

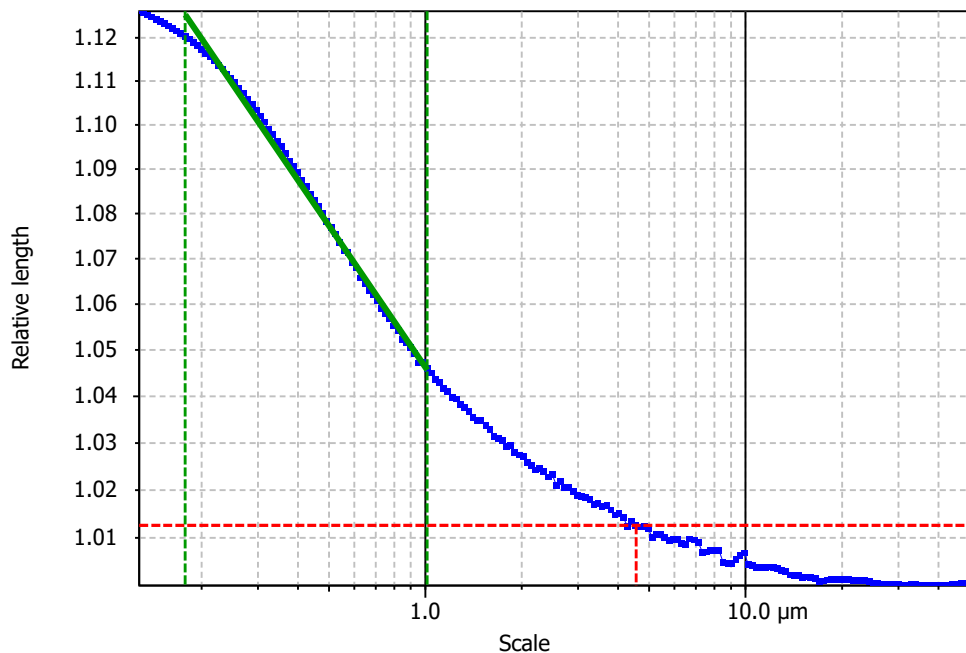
Axis: Z

Layer type: Topography

Length: 4.199 μm

Size: 7099 digits

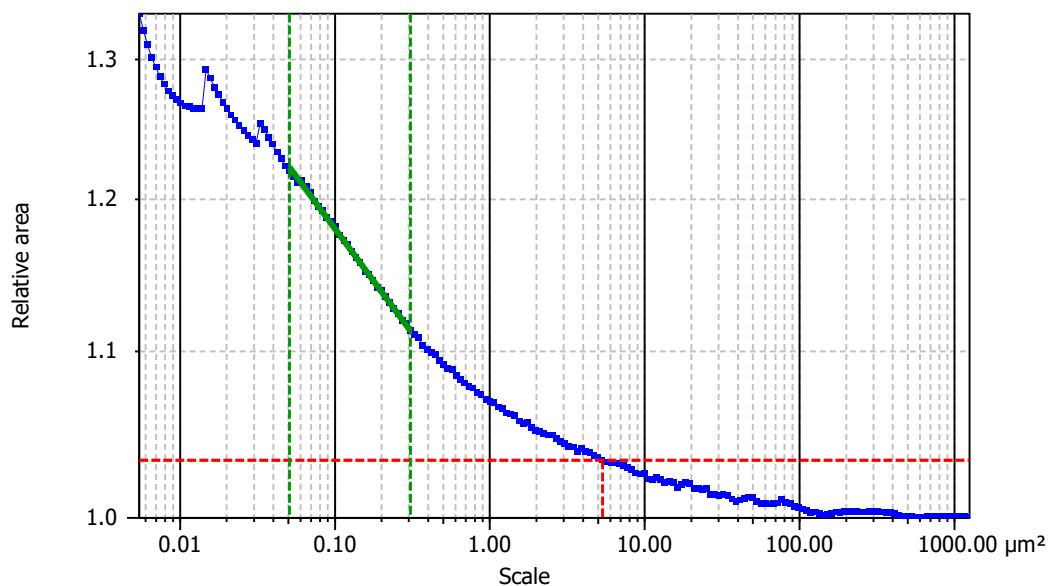
Spacing: 0.0005915 μm

**Information**

Method	Length-scale (rows)
--------	---------------------

Parameters

Parameters	Value	Unit	Comment
epLsar	0.0003305		Length-scale anisotropy (<i>Sfrax</i>) (1.8 μm, 5°)
NewEplsar	0.01768		Length-scale anisotropy (1.8 μm, 5°)

**Information**

Method	Area-scale (four corners)
--------	---------------------------

Parameters

Parameters	Value	Unit	Comment
R ²	0.9984		Reg. coefficient R ²
Asfc	52.05		Fractal complexity
Smfc	0.1005	μm ²	Scale of max complexity
HAsfc9	0.1607		Heterogeneity of Asfc (3x3)
HAsfc81	0.2179		Heterogeneity of Asfc (9x9)